



# Datasheet TX4420-Series VALOR M730



## High Performance Global RAIN RFID Inlay for Enhanced Item Performance



Hana’s comprehensive ARC-certified RAIN RFID (UHF) inlay program is tailored for use in applications across various industries, such as apparel/retail, agriculture and food production, and supply chain/logistics.

Offered in a wide range of delivery formats, our inlays are ideal for numerous applications demanding exceptional performance.

### Applications

- Apparel
- Realtime visibility
- Supply Chain Automation
- Inventory Management

### Industry Segments

- Retail
- Supply Chain & Logistics
- (Industrial) Manufacturing

### Overview

Antenna Size	44 x 20 mm (1.732 x 0.787")
IC	Impinj M730
EPC Memory	128-bit
User Memory	-
TID Memory	96-bit
Frequency Band	UHF 860 - 960 MHz
Protocol	EPC Global Gen 2v2 ISO/IEC 18000-63 Type C
Delivery Formats	Dry Inlay, Wide Web, Paper Face, Multi-Lane,

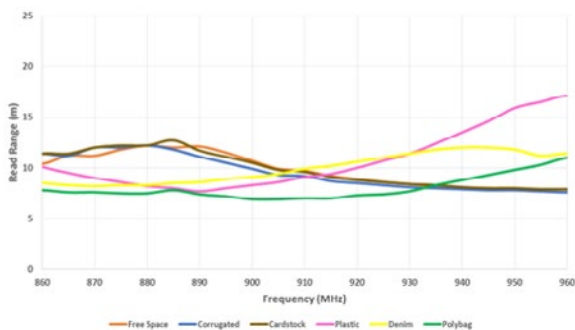
### Quality & Certification

ARC Certified	Yes, Spec F, I, I/F, L, O, Q, R, W5, W6, Y2
Inspection	100% Tested
RoHS	EU Directive 211/65/EU and 2015/863 compliant

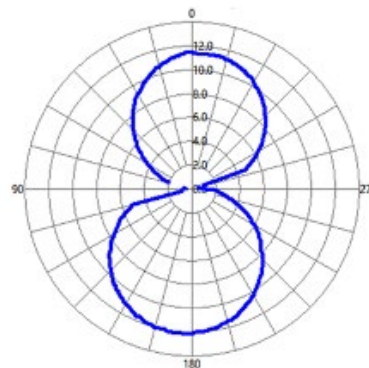
# Technical Overview

	Dry Inlay	Dry Wide Web	Paper Face	Dry, Multi-Lane 6 AC
Product Code	TX4420AM730	TX4420A59M730	TX4420AM730-WW	TX4420BM730
Antenna/tag Size	44 x 20 mm 1.732 x 0.787"	44 x 20 mm 1.732 x 0.787"	47 x 23 mm 1.85 x 0.906"	44 x 20 1.732 x 0.787"
Web Width	50 mm 1.969"	59 mm 2.323"	53,975 mm 2.125"	322 mm 12.677"
Pitch	25,4 mm 1"	25,4 mm 1"	25,4 mm 1"	26,035 mm 1.025"
Inlays per Roll	50.000	50.000	12.000	150.000
Antenna Material	Aluminium	Aluminium	Aluminium	Aluminium
Inlay Substrate	50um PETm 9UM AI	50um PETm 9UM AI	50um PETm 9UM AI	50um PETm 9UM AI
Facesheet Properties	N/a	N/a	40# Thermal Transfer Paper	N/a
Adhesive Properties	N/a	N/a	Acrylic Permanent	N/a
Operating Temperatures	-40 to 85°C -40 to 185°F	-40 to 85°C -40 to 185°F	-40 to 85°C -40 to 185°F	-40 to 85°C -40 to 185°F
Adhesive Application	N/a	N/a	-4°C 25°F	N/a
Adhesive Service Temperature (range)	N/a	N/a	-59 to 93°C -75 to 200°F	N/a

## Read Range



## Orientation Sensitivity



©2026 Hana Technologies, Inc. (Hana) All rights reserved. Third party trademarks and/or trade names used herein are the property of their respective owner(s). Some of the trademarks appear for identification purposes only.

Warranty: Please refer to Hana's UHF Labels standard terms and conditions. RFID inlays are sensitive to ESD. Observe standard industry practices relating to electronics / RFID to keep environmental impact and static charge to a minimum.

Applications: This product should be tested by the customer / user thoroughly under end use conditions to ensure the product meets the requirements. Hana Technologies, Inc. does not represent that this product is fit for any particular purpose or use. The information contained herein is believed to be reliable but Hana Technologies, Inc. makes no representation concerning the accuracy or correctness of the data.

## Hana RFID

29000 Aurora Rd  
Solon, OH, 44139  
United States

+1 330 405 4600  
sales@hana-rfid.com  
www.hana-rfid.com

